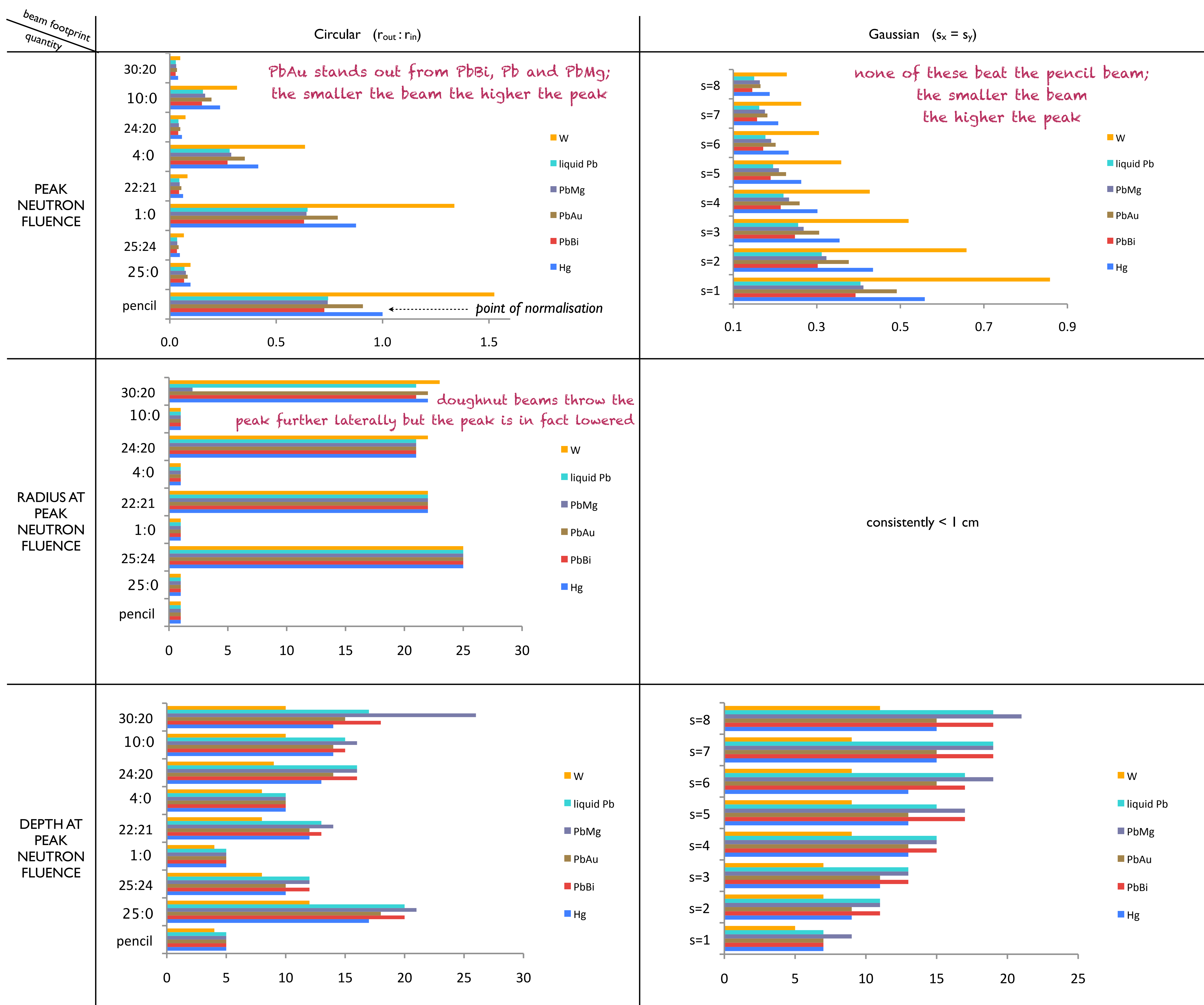
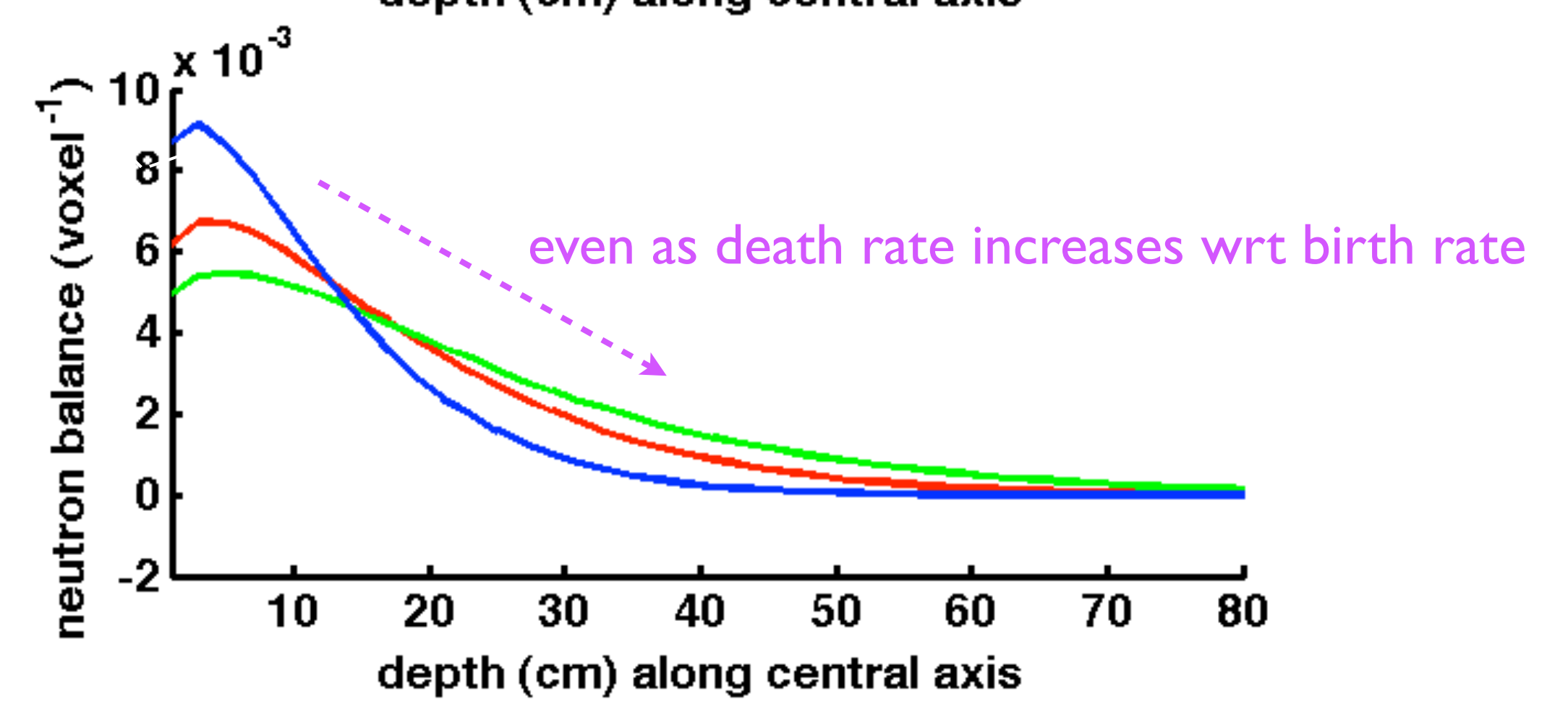
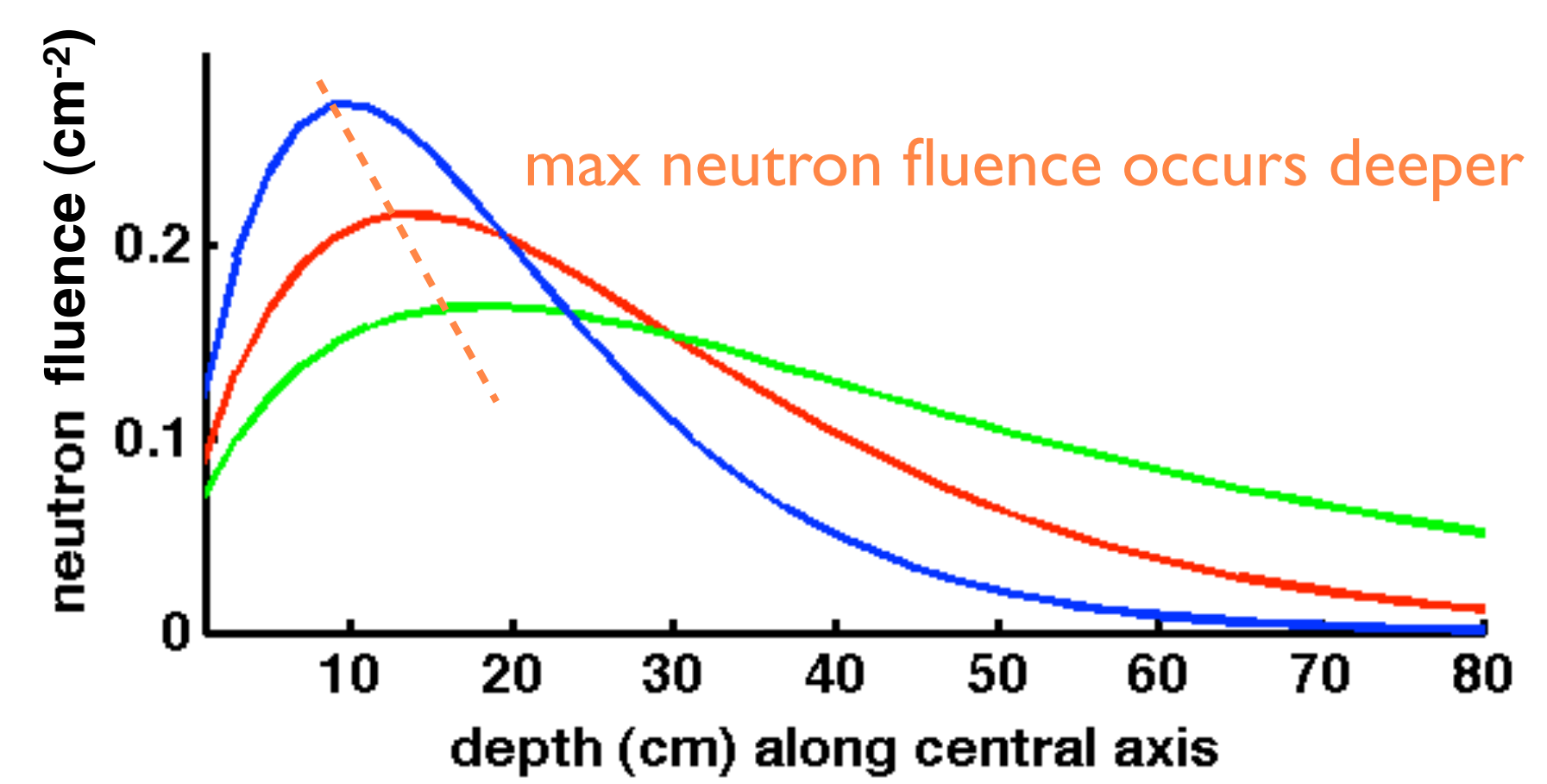
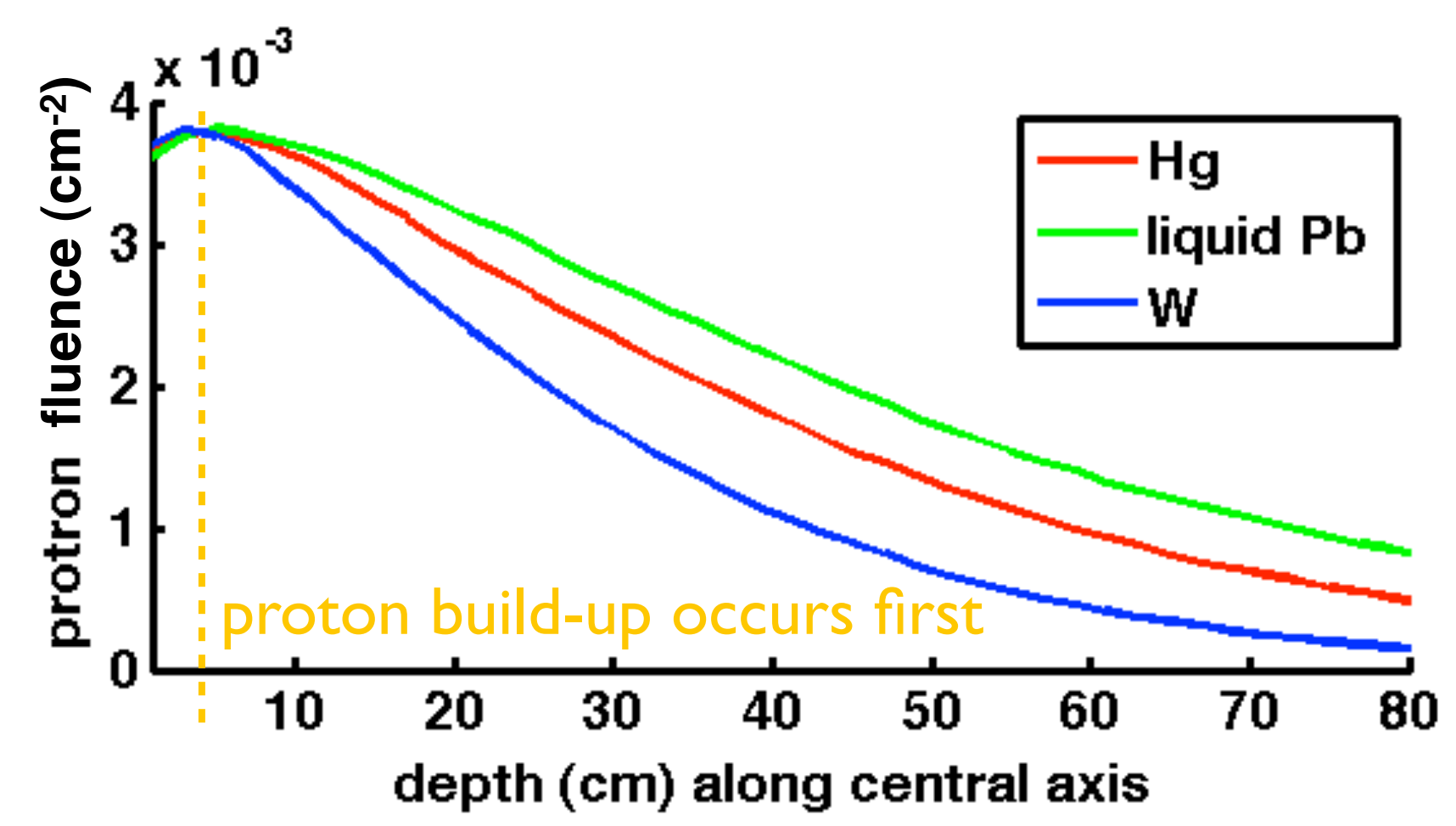
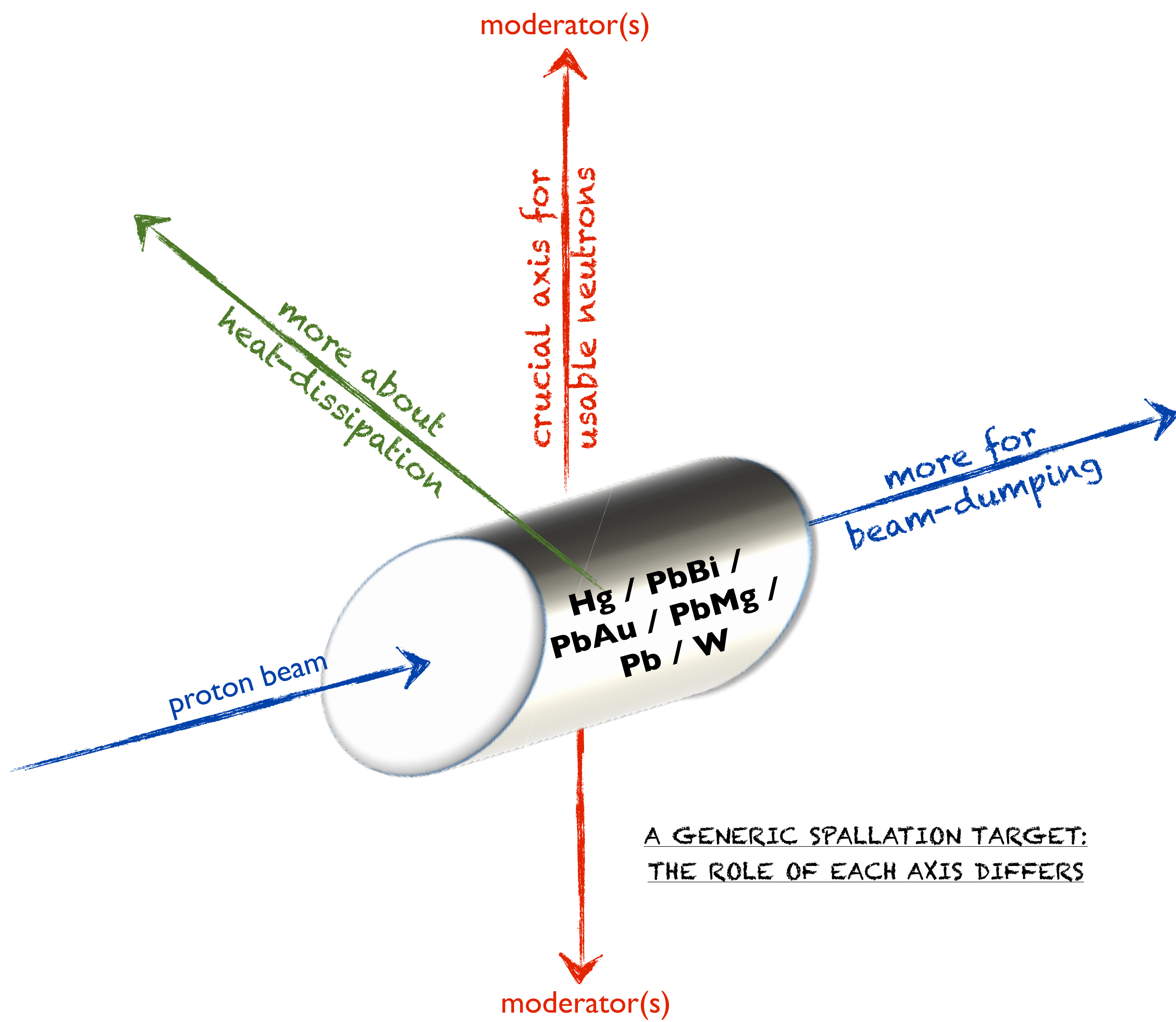


Proton and neutron penetration of candidate target materials for the European Spallation Source

MPW Chin



* All dimensions are given in cm. Error bars are too small to be visible. Fluence is reported per primary proton started.
 * Only neutronics findings are shown. Data are to be considered alongside heating and damage constraints before the optimal configuration could be selected.
 * In all cases monoenergetic 2.5 GeV protons and subsequent particle transport were tracked using FLUKA version 2008.3b.